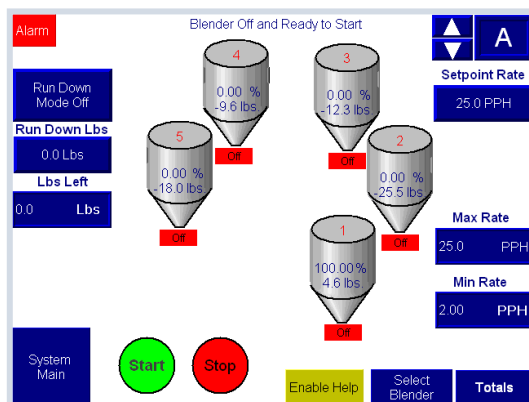
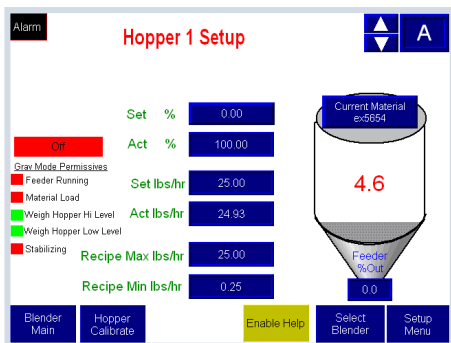


Control Solutions

Advanced Blending Solutions Simplicity Series Control Solutions is specifically designed for extrusion processes. The SC Series control panels come with a variety of controller options allowing the system to be easily scaled to the application. Controllers offered include both Allen Bradley and Beckhoff Automation. The Allen Bradley option offers either the Compact Logix or the Control Logix PLCs. Beckhoff offers either panel-mount or rack-mount PCs.

Graphical Operator interface panels can be purchased separately. Other Operator Interface solutions can be purchased integrated with the SC Controller.

Advanced Blending Solutions manufactures a full line of vacuum convey, blending, gravimetric, and control equipment for the plastics industry. Advanced Blending Solutions also offers a full line of PLC-based controls for gravimetric extrusion control, vacuum sequence control, extruder/die temperature control, and blender control. Advanced Blending Solutions offers PLC-based control retrofits for any blender on the market.



Central Control Panel (SC Series)

- Both Allen Bradley PLC-based control and Beckhoff Automation PC-based control offered.
- Some models offered with integrated Graphical Interface.
- Scaled to the application.
- Simple Interface to OEM/line supervisory control system.

Graphical Interface

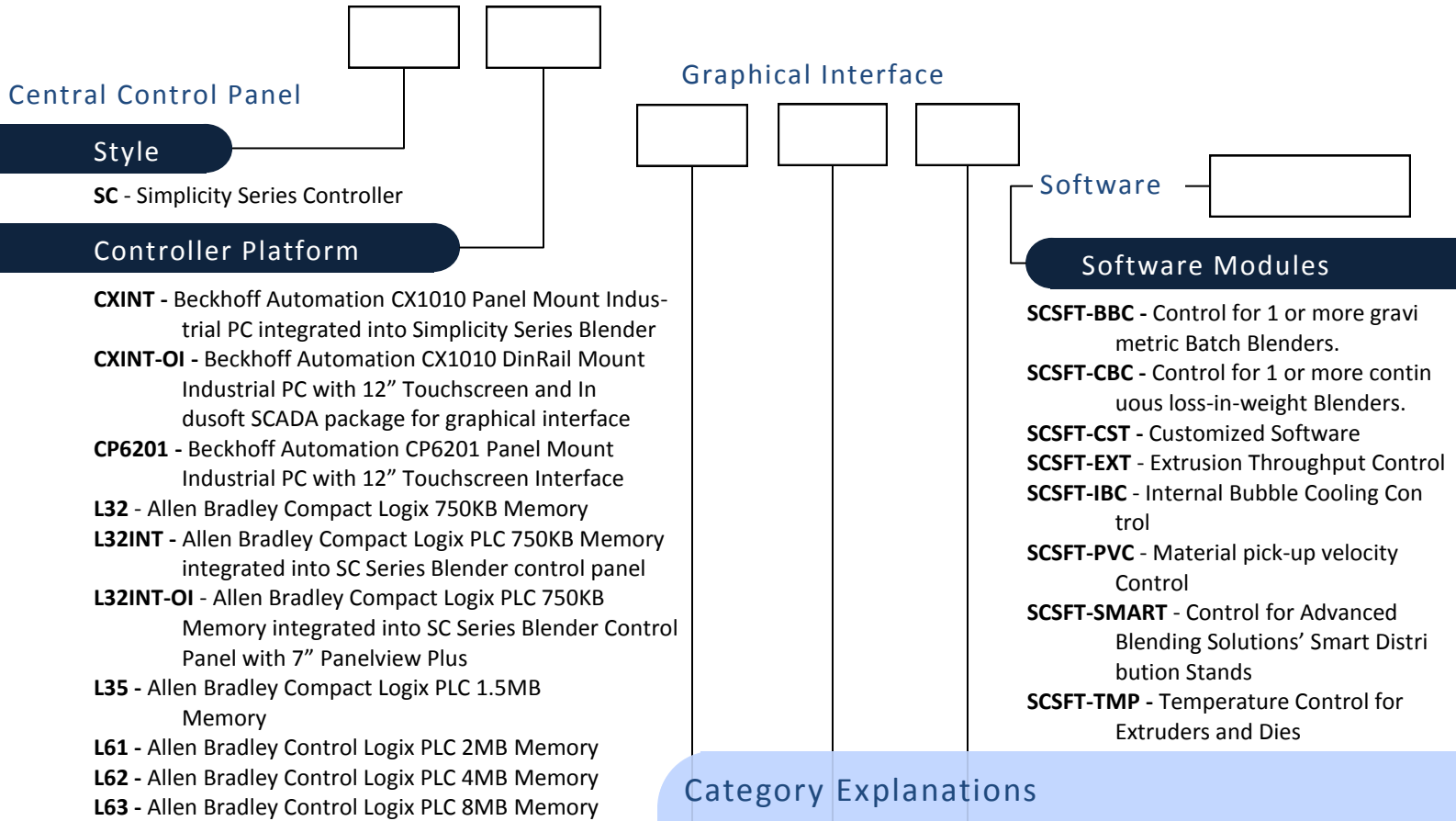
- Allen Bradley Panelview Plus 7" or 10" available as standard sizes. Also scalable to larger screens.
- Touchscreen Interface available with Beckhoff solutions (Indusoft). 12" screen standard.
- Variety of mounting configurations.

Software Modules

- Extrusion Control.
- Continuous Blender Control.
- Batch Blender Control.
- Temperature Control.
- Smart Distribution Control.
- Pump Velocity Control.
- Internal Bubble Cooling Control.
- Custom Software Control.
- Historical Data Logging/Trending.
- Data Collection Solutions.
- Vacuum Sequence Control.

Ordering Information

Enter in each box the letter or number corresponding to your specifications when ordering.



Panelview Plus Graphical Interface

Style

GI - Simplicity Series Graphical Interface

Screen Size

- A - 7" Panelview Plus Touchscreen
- B - 10" Panelview Plus Touchscreen
- C - Beckhoff CP6601 12" Touchscreen Remote Operator Interface
- D - Beckhoff CP 6607 5.7" Touchscreen Remote Operator Interface

Mounting Option

- PA - Pendant arm
- PLC - In SC Series PLC Enclosure
- PNLC - In a concept-style enclosure
- BP - In Simplicity Blender Panel
- N - Panelview and power supply shipped loose
- CNSL - Operator panel with keyboard, mouse, and printer

Category Explanations

Central Control Panels

Both Beckhoff Automation PC-based controls and Allen Bradley PLC-based controls available. Beckhoff Automation controls come with integrated touchscreen. To add a touchscreen to Allen Bradley controls, use the Graphical Interface category.

Graphical Interface

This category offers the option of adding a touchscreen for use with Allen Bradley controls. You can also add an additional remote option to Beckhoff Automation controls.

Software

Choose the software modules required for your application. The SC-series controls that are integrated into your blender panel (SC-L32INT, SC-L32INT-OI, SC-CXINT, and SC-CXINT-OI) come with basic sequence-control software and software for controlling a single blender. All other SC controllers require the purchase of the required software modules for your application.

SCSFT-EXT - System can be configured for thickness control or pph control with integrated layer ratio control for up to 20 layers.

SCSFT-CBC - System can control a combination of Advanced Blending Solutions' Simplicity blenders and/or other continuous blenders.

SCSFT-SMART - Module provides recipe verification, common material line pump sequencing, common vacuum manifold sequencing enhanced inventory tracking with material name and lot alphanumeric identifiers, and connection status information.

