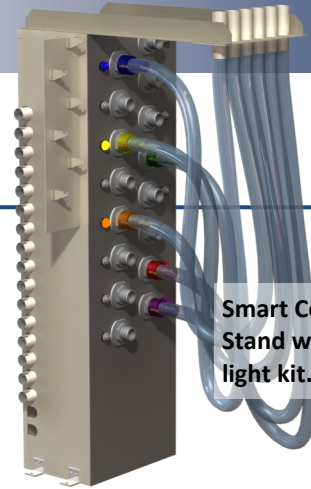




Smart Connection System

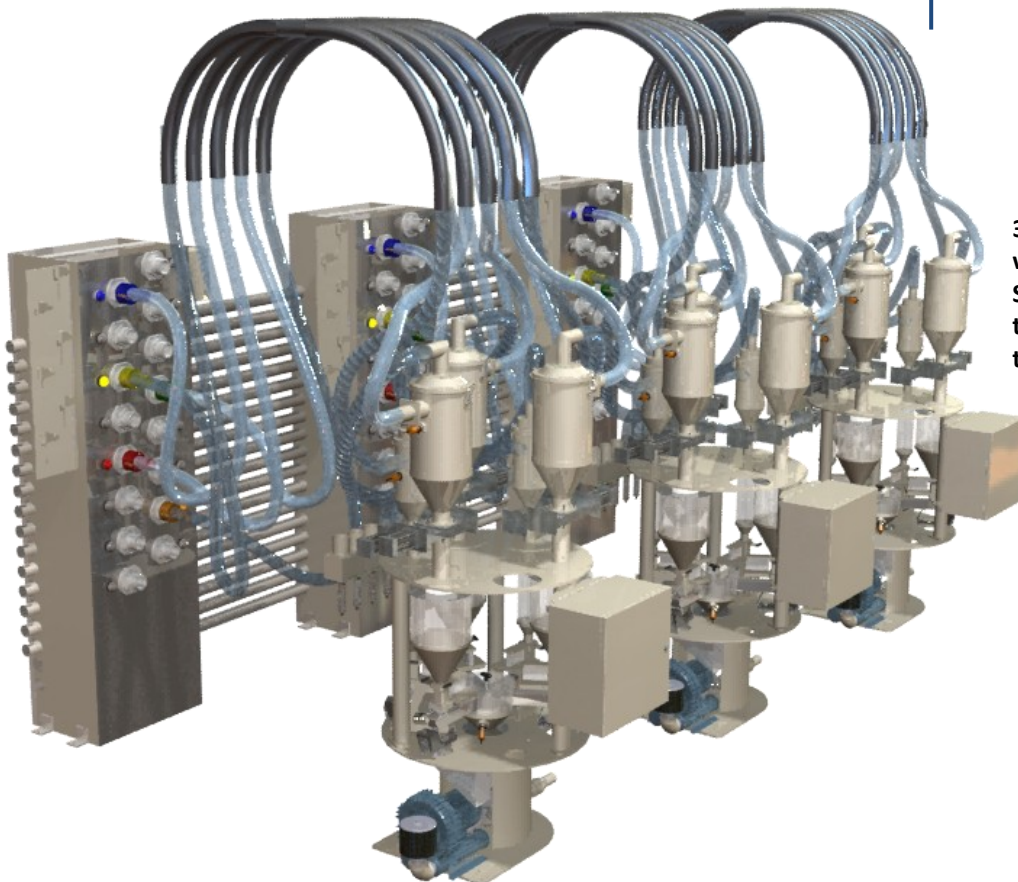
Advanced Blending Solutions' Smart Connection System is a revolutionary development geared to multi-layer co-extrusion systems. The smart connections allows a single common material line to be used in applications with multiple vacuum pumps. A traditional 10-silo system being serviced by 3 vacuum pumps would require 30 common material lines. With the Smart Connection system, the requirement is 10 material lines. A Smart Stand will also verify that the material connections match the recipe, reducing the possibility of human error.

Advanced Blending Solutions manufactures a full line of vacuum convey, blending, gravimetric, and control equipment for the plastics industry. Advanced Blending Solutions also offers a full line of PLC-based controls for gravimetric extrusion control, vacuum sequence control, extruder/die temperature control, and blender control. Advanced Blending Solutions offers PLC-based control retrofits for any blender on the market.



Smart Connection Stand with optional light kit.

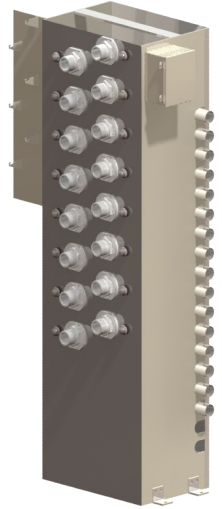
- Allows a single common material to be used in applications with multiple vacuum pumps.
- May pay for itself in installation cost savings alone.
- Verifies that material connections match recipes.
- Standard 1.5" - 4" connections.
- Custom stands available.
- Optional color coordination available making changeovers simple.



3-extruder Smart System with optional recipe lights. Simply match the color of the hoses to the color of the light on the ports.

Ordering Information

Enter in each box the letter or number corresponding to your specifications when ordering.



Style

- SMRT** - Smart Stand with 1.5" - 3" lines
- SMRTL** - Smart Stand with 3" - 4" lines

No. of VRs

- 1** - 1 Female Hose Connection
- 2** - 2 Female Hose Connections
- Up to 18 Connections**

No. of Ingredients

- 1** - 1 Male Hose Connection
- 2** - 2 Male Hose Connections
- Up to 40 Connections**

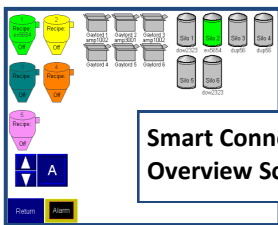
Optional Light Kit

Style

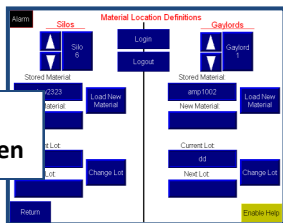
SMRTLGT - Optional light kit for Smart Stand

No. of Lights

- Number of ports that will be lighted



Smart Connection Overview Screen



Silo Material Definition Screen

Material Manager Screen

Material Number	Material Name (Or Check Mark)	Specific Gravity	Pickup Velocity (FPM)
1	90w223	0.911	4200
2	av5054	0.865	4100
3	emp1002	0.855	
4	3221	0.910	4000
5		0.900	0
6		0.900	0
7		0.900	0
8		0.900	0
9		0.900	0
10		0.900	0

Integrated Velocity Control

Category Explanations

Style

The Smart Connection Stand contains a junction box for feeding back to a Blender/VR Station I/O panel, Stainless Steel front, hose stand for mounting to Simplicity Blender or VR station, and I/O in the Vacuum Receiver Station or Simplicity Blender panel for providing the connection detection.

No. of VRs

This designates the number of female Vacuum Receiver hoses that will connect to the Smart Stand. The Smart Connection Stand utilizes female QuickConnect push-in connections with a double O-ring seal.

No. of Ingredients

This designates the number of different material ingredient ports required for your system. The Smart Connection Stand features male QuickConnect connections with tapered inserts for ease of use.

Optional Light Kit

SMRTLGT - This includes a light per port and coloring of the female connector on each hose assembly. This gives the operator a visual aide for helping to make proper connections.

- This indicates the number of ports on the Smart Stand that will be lighted.

